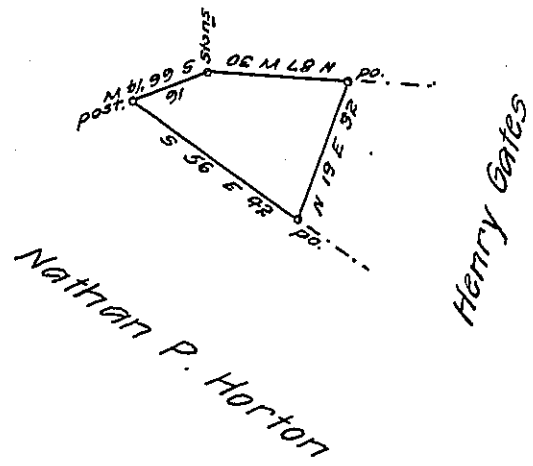


Alexander Eichelberger



Nathan P. Horton

Henry Gates

Situate in Hopewell township Bedford County containing 3 acres
 69 perches, and the usual allowance of six per cent for roads &c.
 Surveyed the 11th Feby. A.D. 1871. In pursuance of a warrant granted
 to Abraham Fluck dated the 1st day of Aug^r. A.D. 1870.

Sam^l. Ketterman. C.S.

To Jac^s. M. Campbell Esqr.

S. G.

IN TESTIMONY that the above is a copy of the original remaining on file in
 the Department of Internal Affairs of Pennsylvania, made
 conformably to an Act of Assembly approved the 16th day of
 February, 1833, I have hereunto set my Hand and caused
 the Seal of said Department to be affixed at Harrisburg,
 this twenty-fifth day of October 1907.

Henry How
 Secretary of Internal Affairs.